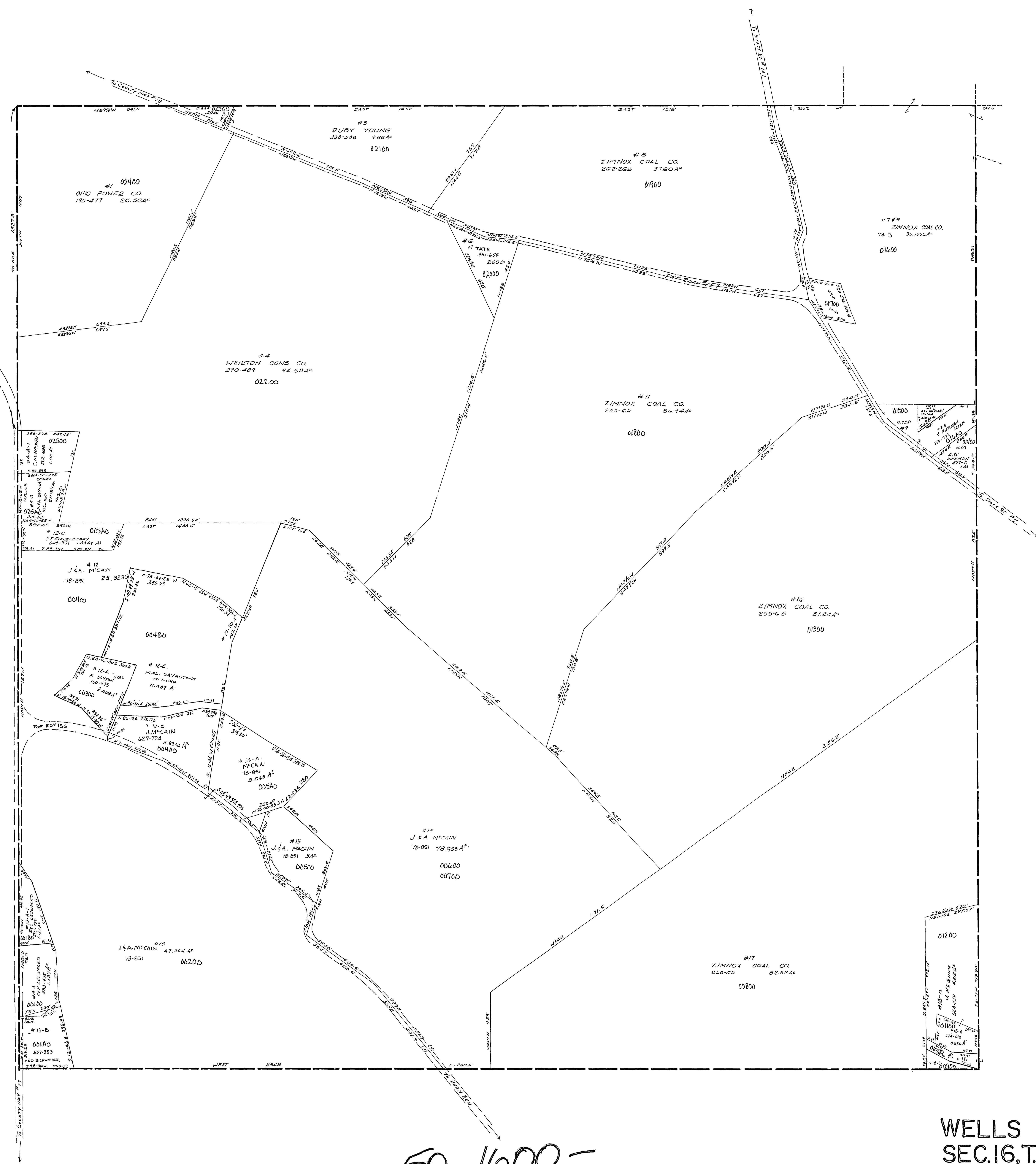
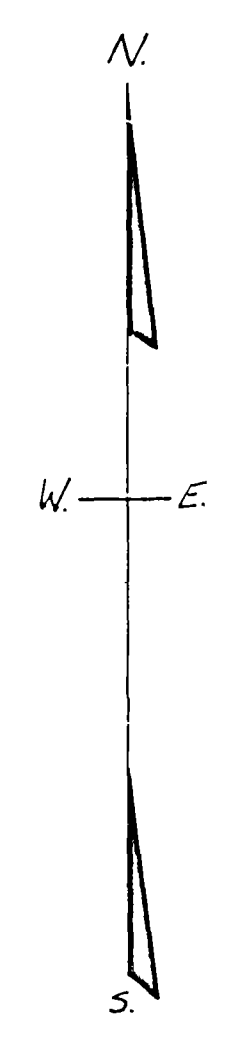


- #18 W.P. SILVER 333-72 31,135 A² TOT
- #18A B.J. M'GUIRE 12-28-62 .55 GA¹
- #18-C W. KENDRACH 341-104 .17 GA¹
- #9 A.V. HICKMAN 193-269 0.75 AC.
- *7A STARVAGGI INDUSTRIES INC. 640-518 1.00 AC.



WELLS TWP.
 SEC. 16, T. 5, R. 2.
 SCALE: 1"=200'